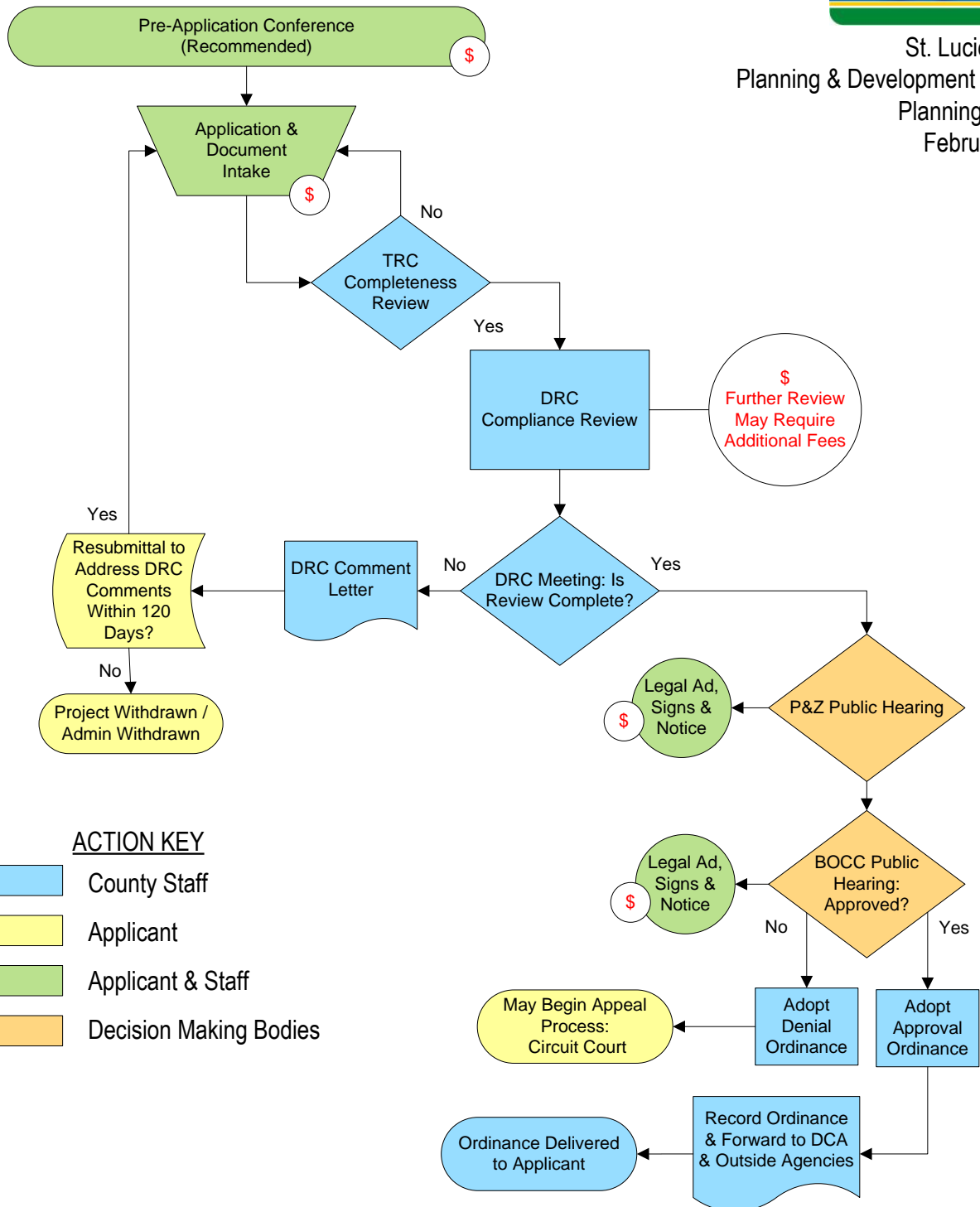


Comprehensive Plan Amendment: Small-Scale



St. Lucie County
 Planning & Development Services
 Planning Division
 February 2011



ACTION KEY

- County Staff
- Applicant
- Applicant & Staff
- Decision Making Bodies

Please Note:

- This graphic was compiled from numerous sources and is provided for reference and informational purposes only. No warranties expressed or implied are provided for the accuracy of the data herein, its use, or its interpretation. Based on F.S. § 163.
- Further Review may require additional fees such as for a concurrency review (transportation and utilities) and fire district review.
- DRC review includes, but is not limited to, the following County Departments and outside agencies: SLC Planning Division, SLC Environmental Resources, SLC Transit, SLC Mosquito Control, SLC Attorney, SLC Engineering, SLC Surveyor, SLC Stormwater, SLC Road & Bridge, SLC Zoning, SLC Code Enforcement, SLC Utilities, City of Ft. Pierce, City of Port St. Lucie, School Board, SLC Fire District, US Army Corps of Engineers, US Fish & Wildlife, S. Fl. Water Management District and Fl. Dept. of Environmental Protection.

Flow Chart Key

- \$ - Fee due. See fee schedule.
- BOCC - Board of County Commissioners
- DCA - Department of Community Affairs
- DRC - Development Review Committee
- LDC - Land Development Code
- P&Z - Planning & Zoning Board
- TRC - Technical Review Committee

Log onto the Planning Division Website for further info:
www.stlucieco.gov/planning