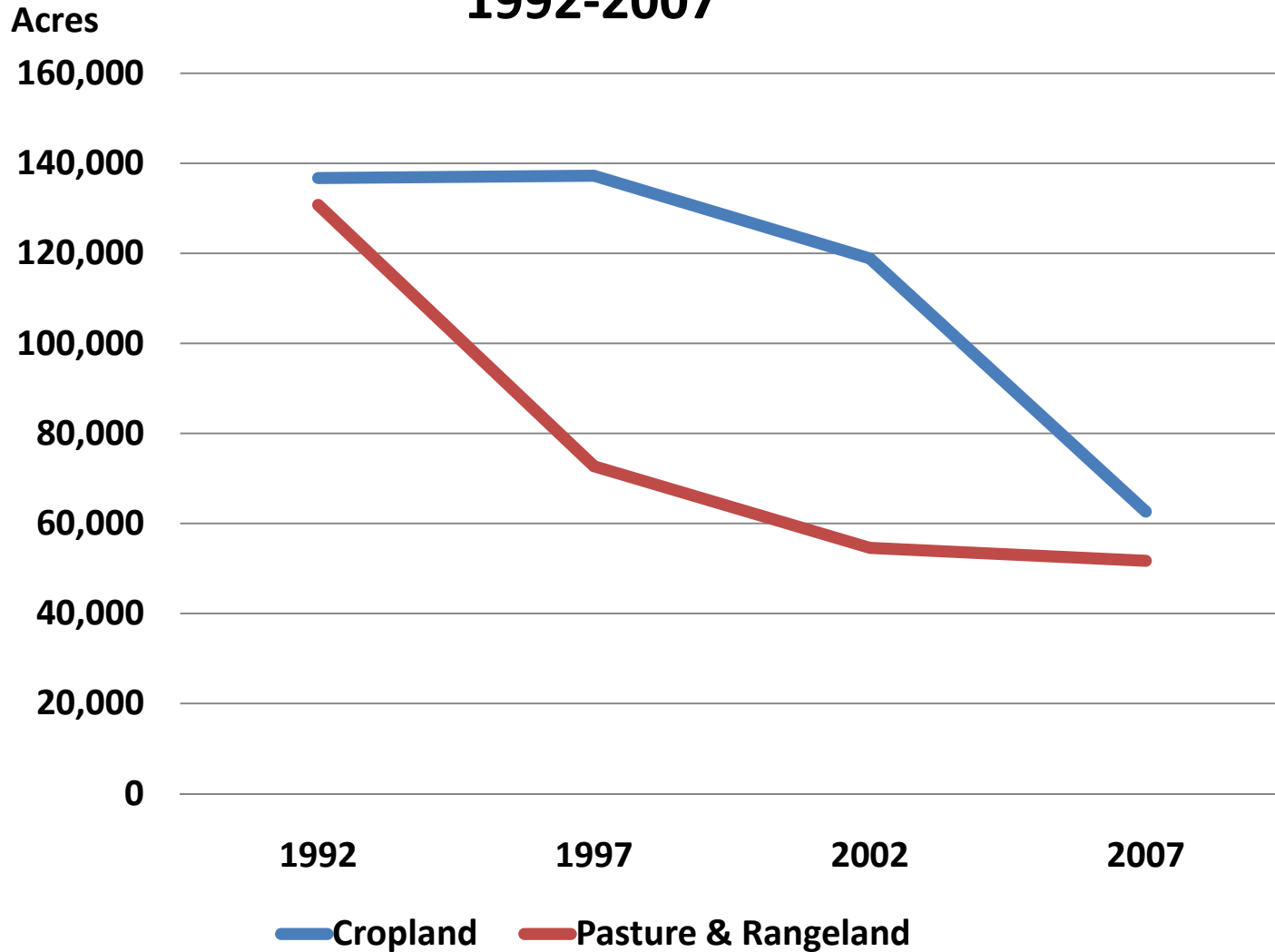


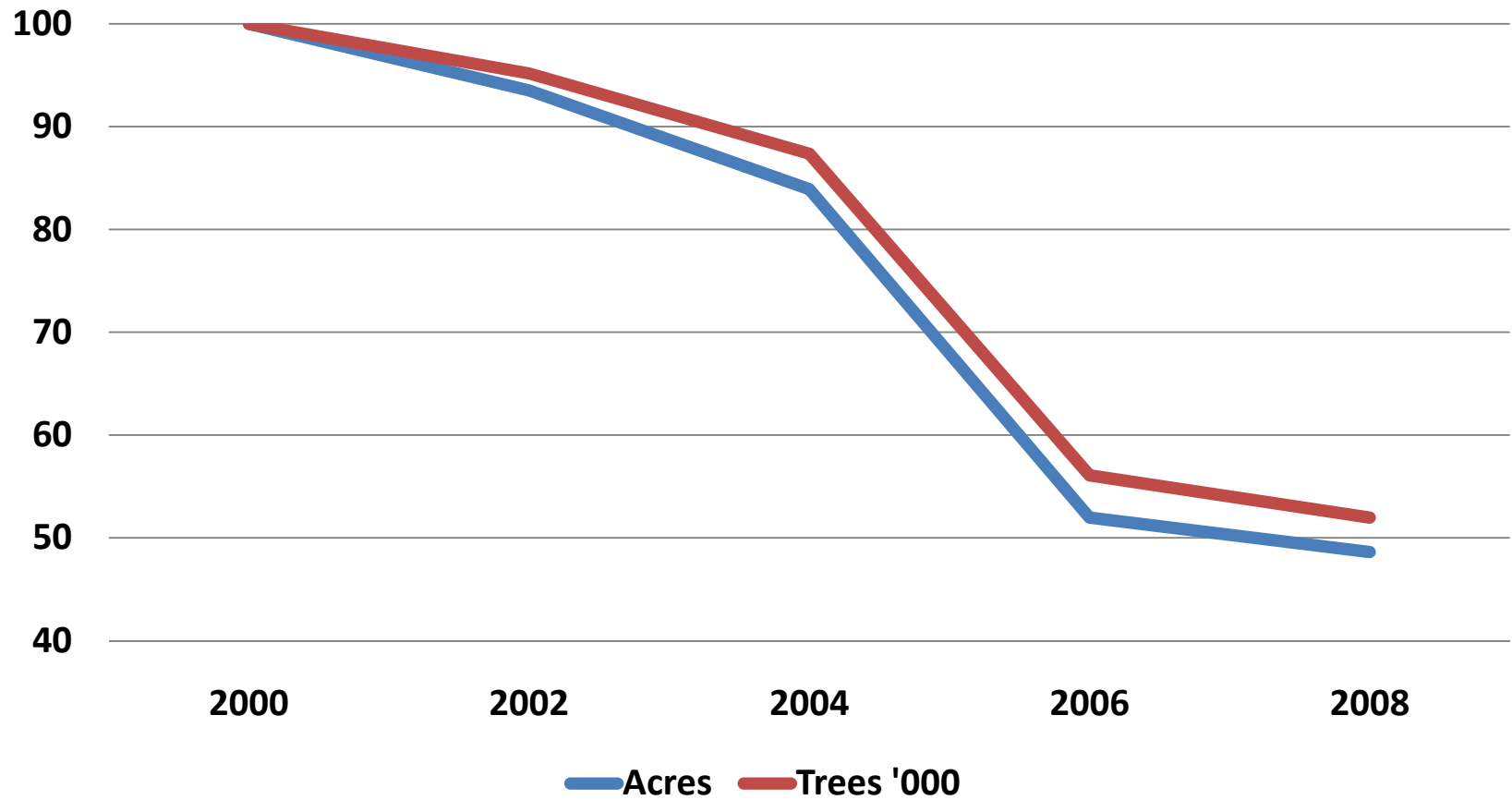
# Notes on St. Lucie County Agriculture

Dr. William B. Stronge

# Cropland and Pasture and Rangeland St. Lucie County 1992-2007



**Citrus Acreage and Trees  
St. Lucie County  
State Biennial Census  
Indexes 2000=100**



## Citrus Production By Type St. Lucie County

'000 Boxes

20,000

16,000

12,000

8,000

4,000

0

2000-01

2001-02

2002-03

2003-04

2004-05

2005-06

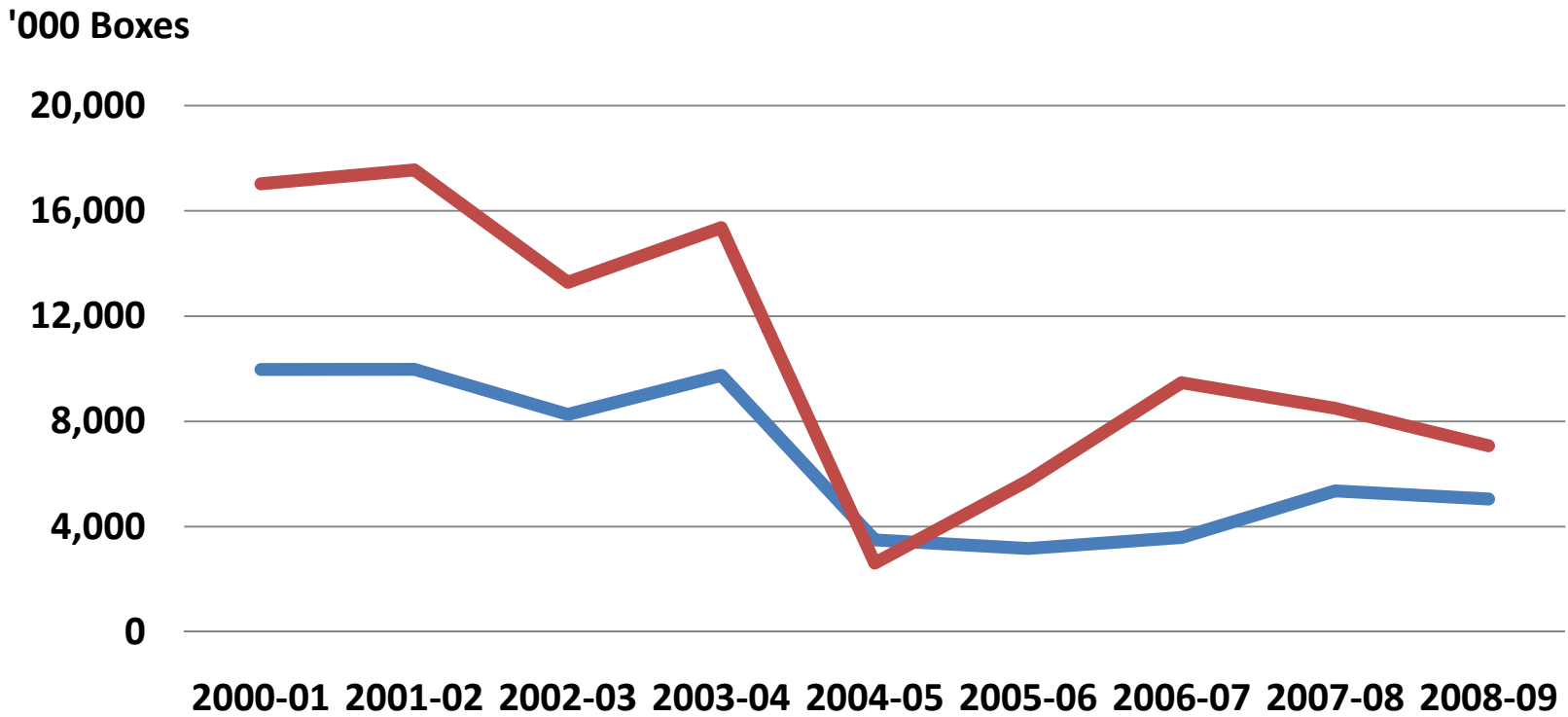
2006-07

2007-08

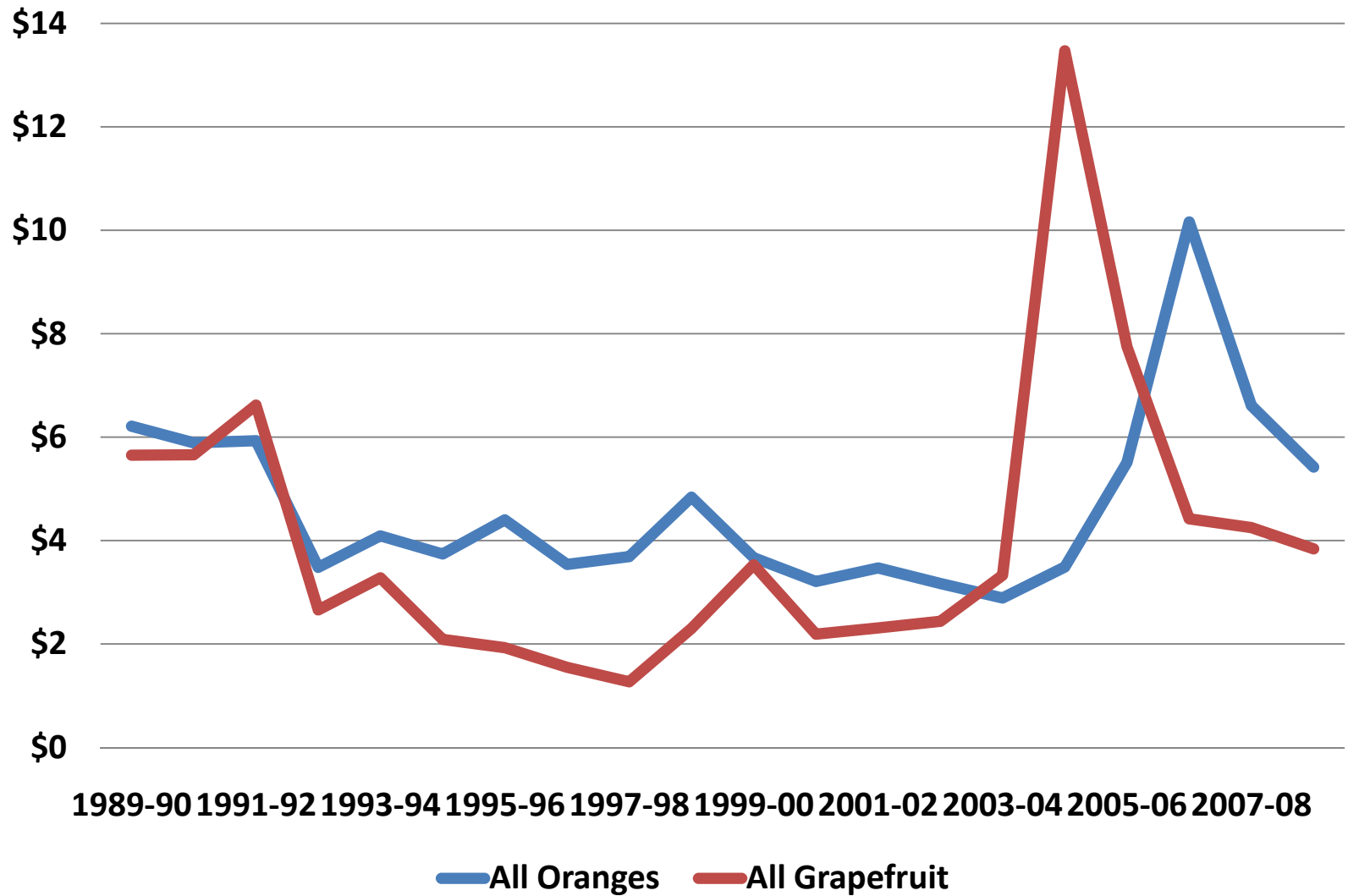
2008-09

— All Oranges

— All Grapefruit







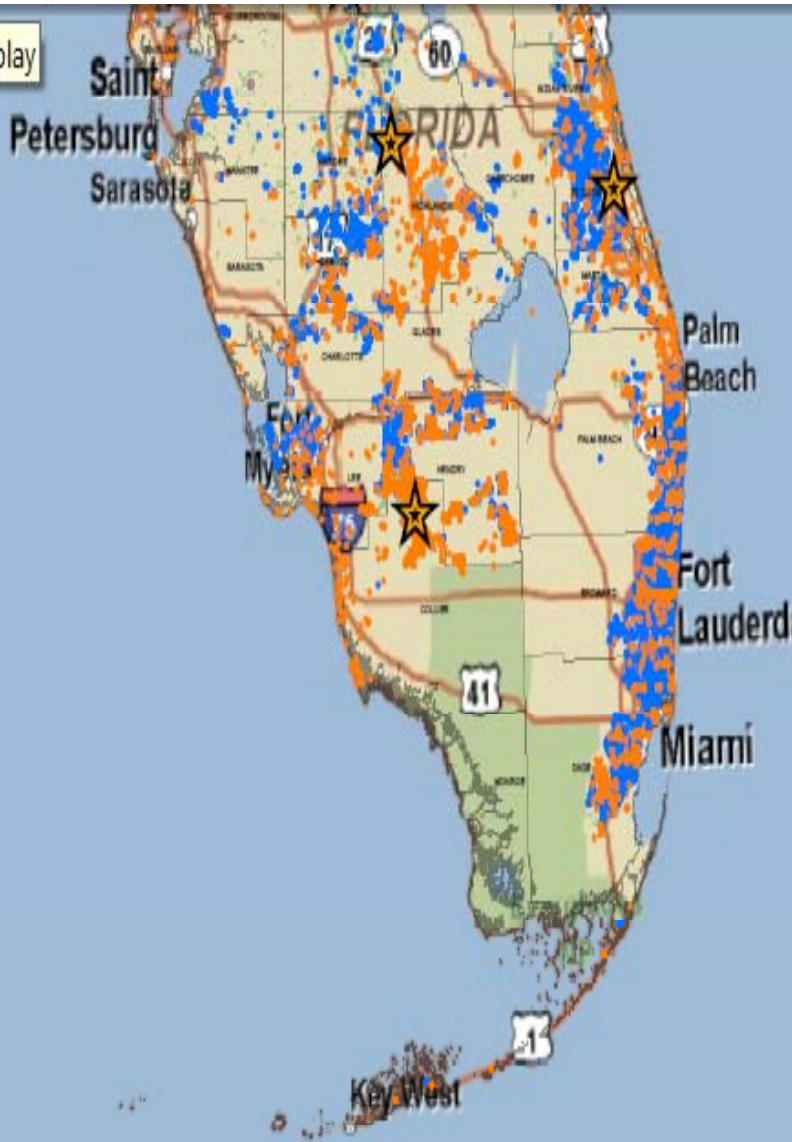
# Florida On Tree Orange and Grapefruit Prices Dollars Per Box



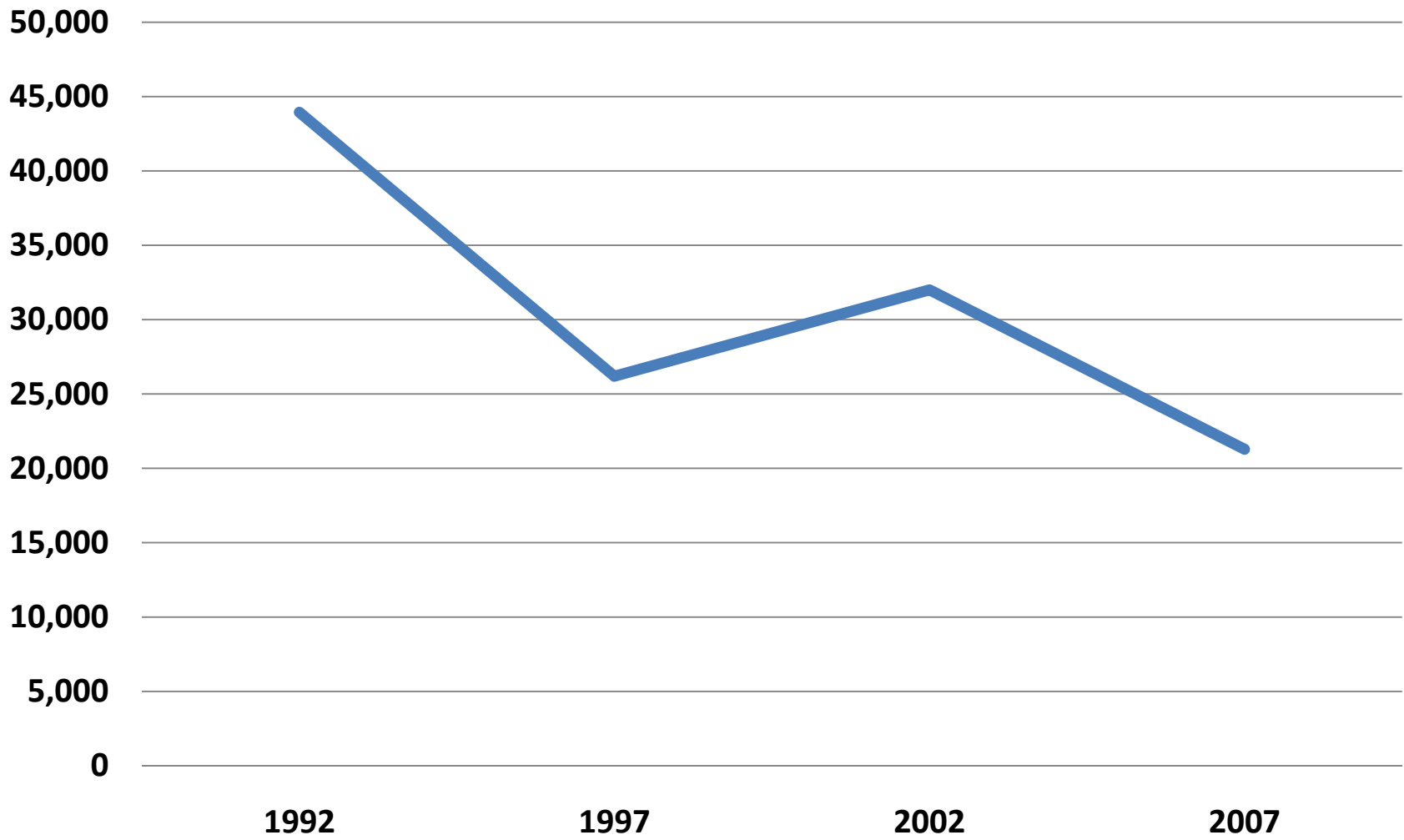
Gulf of Mexico

**Legend**

-  CHRP Office Locations
-  Commercial Citrus Production Areas
-  Citrus Canker
-  Citrus Greening(HLB) Specimens



# Cattle and Calves Inventory St. Lucie County



**Value of Agricultural Production and Expenses**  
**St. Lucie County**  
**Indexes 1992=100**

